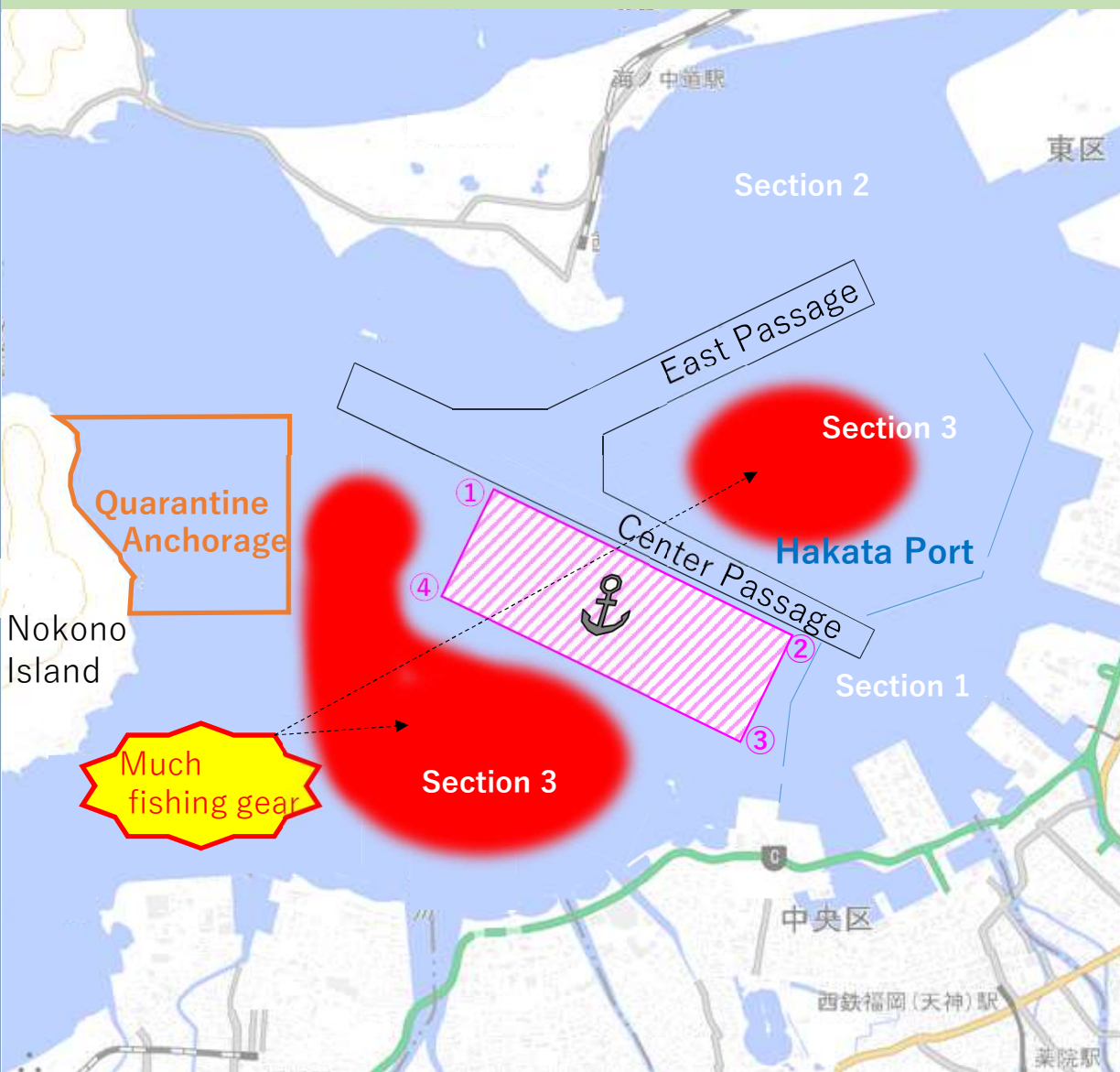


To all users of Hakata Port ! ~ To create an easy-to-use Hakata Port ~



Vessels anchored on the south side of the center passage in Hakata Port Section3 are kindly requested to cooperate in anchoring in the following anchoring areas.

➤ Anchoring Area

Quarantine Anchorage or in the pink shaded areas(①②③④) marked on the map on the left.

- | | | |
|---|--------------|---------------|
| ① | N33° 37' 48" | E130° 21' 00" |
| ② | N33° 37' 08" | E130° 22' 40" |
| ③ | N33° 36' 37" | E130° 22' 22" |
| ④ | N33° 37' 17" | E130° 20' 42" |

➤ Period (Trial operation period)

From May 1 to October 31, 2022

➤ Remarks

- ⦿ There are no restrictions on the anchorage area above when evacuating in stormy weather due to a typhoon or in the event of an engine failure.
- ⦿ There are no buoys to indicate the anchoring area.
- ⦿ Please consider the draft of your vessel and the situation of other anchored vessels in the vicinity and pay attention to safety before anchoring.

【Contact Information】

- ⇨ Seaport and Airport Bureau of Fukuoka City
Port & Harbor Operation Section TEL: +81 92 282 7124
- ⇨ Fukuoka Coast Guard Office TEL: +81 92 281 5867