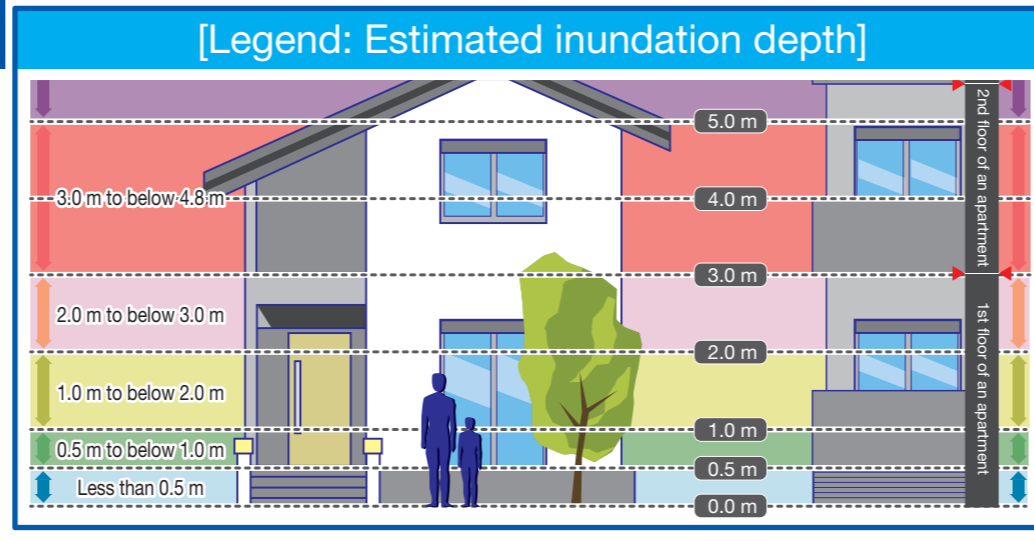


# 【中央区】洪水ハザードマップ

(Target rivers: Nakagawa River and Hiigawa River) / [Chuo Ward] Flood Hazard Map / 【中央区】洪涝防災地图 / 【주오구】홍수위험지도

## Flood hazard map (Chuo Ward version)

- This flood hazard map shows the predicted situation of inundation from the Nakagawa and Hiigawa Rivers that could be caused by the maximum expected rainfall under the current conditions of river width, depth, and dams based on a simulation performed by the Fukuoka Prefectural Government.
- "The maximum expected rainfall" is as follows.
  - Nakagawa River basin: 961 mm/24 hours
  - Hiigawa River basin: 615 mm/6 hours
- On this flood hazard map of Chuo Ward, the inundation depth of areas at risk of inundation from both the Nakagawa and Hiigawa Rivers indicates the deeper value.



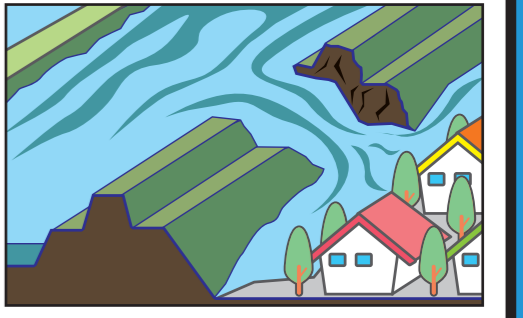
The shaded areas along rivers indicate house collapsing flood hazard areas. The situation of inundation changes depending on how it rains and the occurrence of flooding from small and medium-sized rivers. Therefore, please note that areas not indicated as flood hazard areas on this map could be inundated.

## House collapsing flood hazard areas

There are two types of house collapsing flood hazard areas.

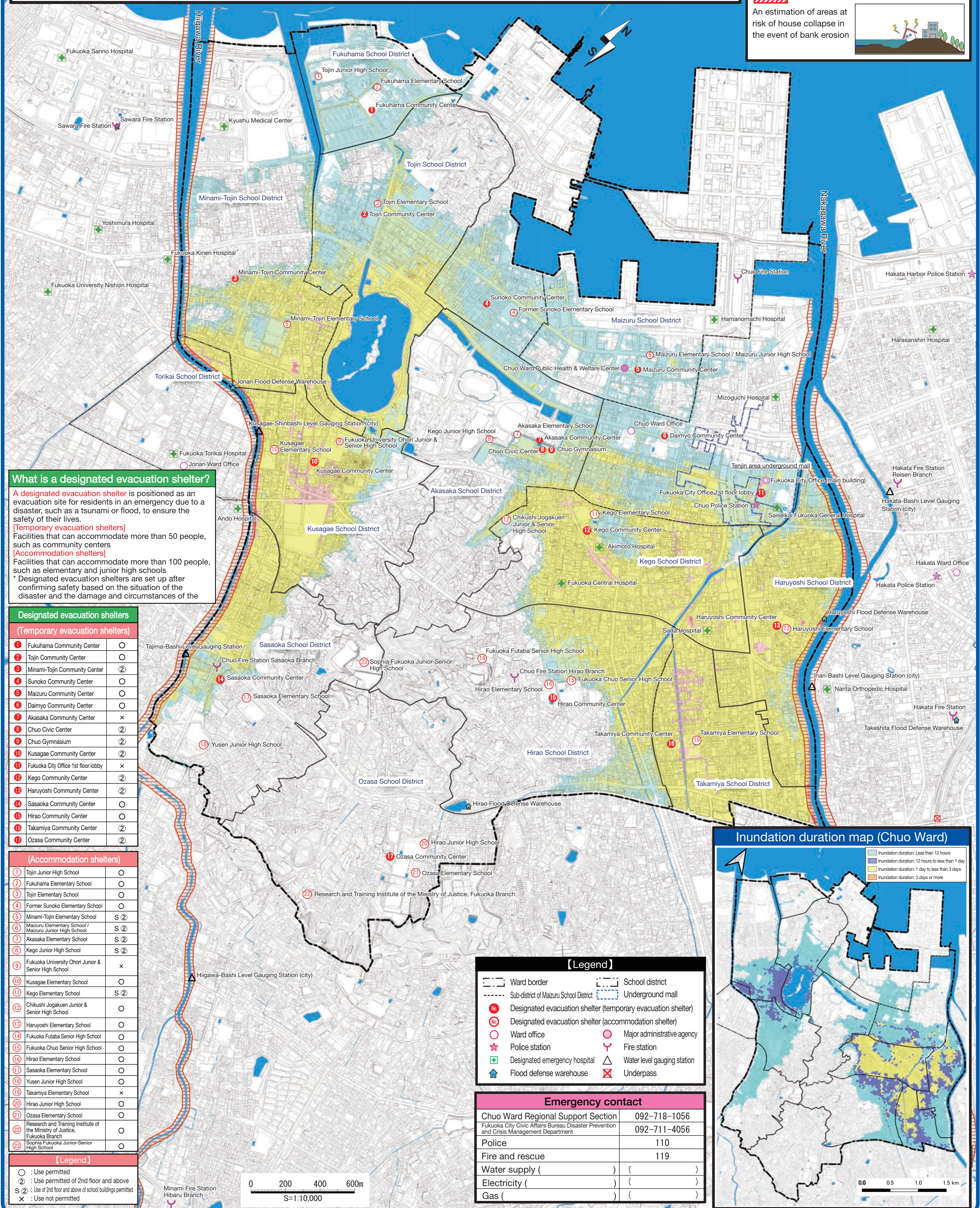
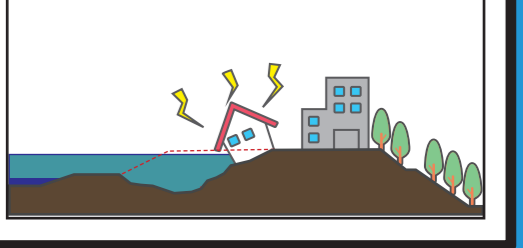
**Overflow**

An estimation of areas at risk of house collapse in the event of a levee breach or the like



**Bank erosion**

An estimation of areas at risk of house collapse in the event of bank erosion



## What is a designated evacuation shelter?

A designated evacuation shelter is positioned as an evacuation site for residents in an emergency due to a disaster, such as a tsunami or flood, to ensure the safety of their lives.

**[Temporary evacuation shelters]**  
Facilities that can accommodate more than 50 people, such as community centers

**[Accommodation shelters]**  
Facilities that can accommodate more than 100 people, such as elementary and junior high schools

\* Designated evacuation shelters are set up after confirming safety based on the situation of the disaster and the damage and circumstances of the

## Designated evacuation shelters

### (Temporary evacuation shelters)

1	Fukuoka Community Center	○
2	Tojin Community Center	○
3	Minami-Tojin Community Center	②
4	Sunoko Community Center	○
5	Maizuru Community Center	○
6	Daimyo Community Center	○
7	Akasaka Community Center	×
8	Chuo Civic Center	②
9	Chuo Gymnasium	②
10	Kusagae Community Center	②
11	Fukuoka City Office 1st floor lobby	×
12	Kego Community Center	②
13	Haruyoshi Community Center	②
14	Sasaoka Community Center	○
15	Hirao Community Center	○
16	Takamiya Community Center	②
17	Ozasa Community Center	②

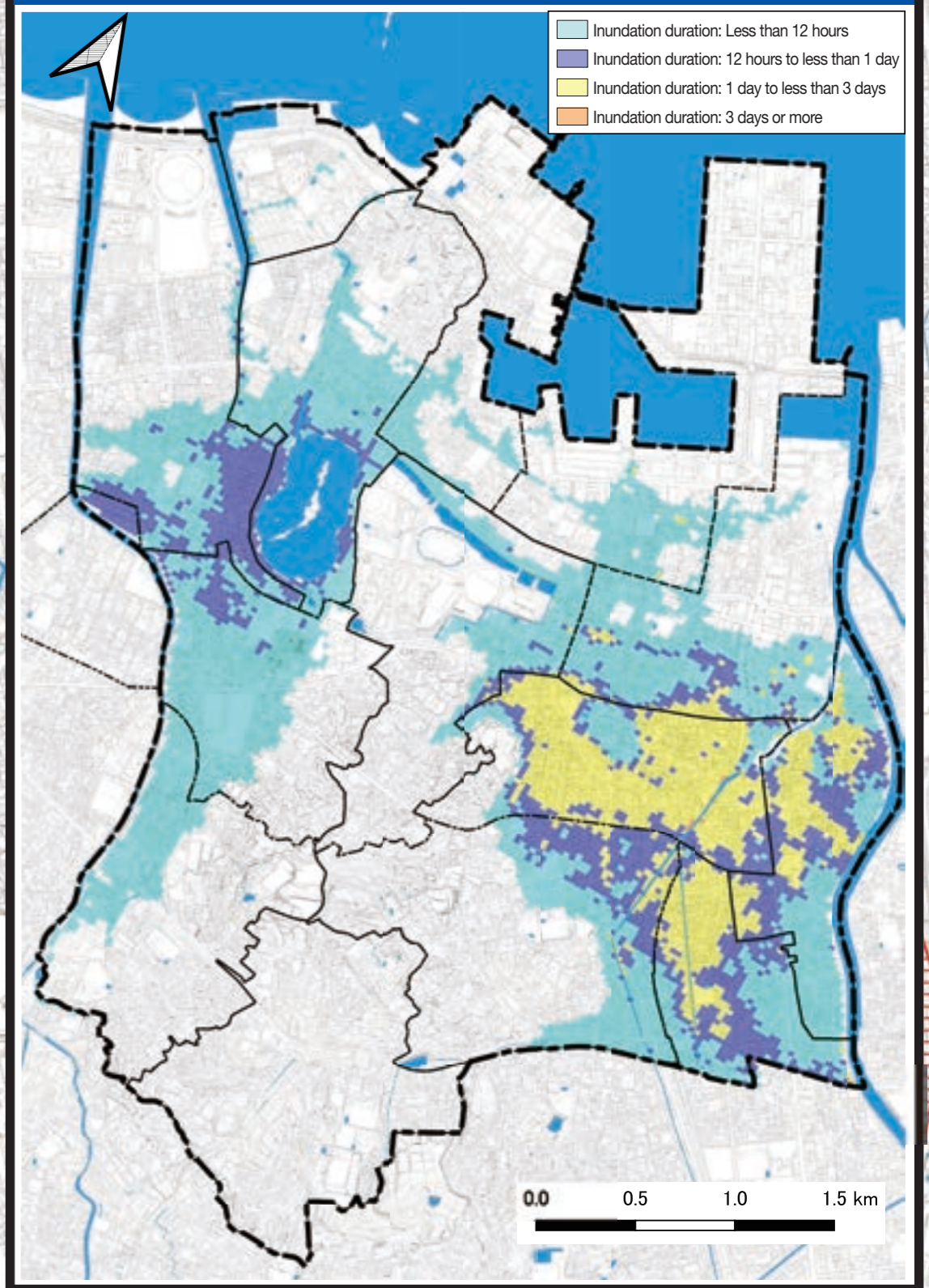
### (Accommodation shelters)

1	Tojin Junior High School	○
2	Fukuoka Elementary School	○
3	Tojin Elementary School	○
4	Former Sunoko Elementary School	○
5	Minami-Tojin Elementary School	S ②
6	Maizuru Elementary School / Maizuru Junior High School	S ②
7	Akasaka Elementary School	S ②
8	Kego Junior High School	S ②
9	Fukuoka University Ori Junior & Senior High School	×
10	Kusagae Elementary School	○
11	Kego Elementary School	S ②
12	Chikushi Jogakuen Junior & Senior High School	○
13	Haruyoshi Elementary School	○
14	Fukuoka Futaba Senior High School	○
15	Fukuoka Chuo Senior High School	○
16	Hirao Elementary School	○
17	Sasaoka Elementary School	○
18	Yusen Junior High School	○
19	Takamiya Elementary School	×
20	Hirao Junior High School	○
21	Ozasa Elementary School	○
22	Research and Training Institute of the Ministry of Justice, Fukuoka Branch	○
23	Sophia Fukuoka Junior-Senior High School	○

## [Legend]

- : Use permitted
- ② : Use permitted of 2nd floor and above
- S ② : Use of 2nd floor and above of school buildings permitted
- ×

## Inundation duration map (Chuo Ward)



## [Legend]

- Ward border
- Sub-district of Maizuru School District
- School district
- Underground mall
- Designated evacuation shelter (temporary evacuation shelter)
- Designated evacuation shelter (accommodation shelter)
- Ward office
- Major administrative agency
- ★ Police station
- ⚡ Fire station
- ⚕ Designated emergency hospital
- △ Water level gauging station
- 🏠 Flood defense warehouse
- ⓧ Underpass

## Emergency contact

Chuo Ward Regional Support Section	092-718-1056
Fukuoka City Civic Affairs Bureau Disaster Prevention and Crisis Management Department	092-711-4056
Police	110
Fire and rescue	119
Water supply ( )	( )
Electricity ( )	( )
Gas ( )	( )