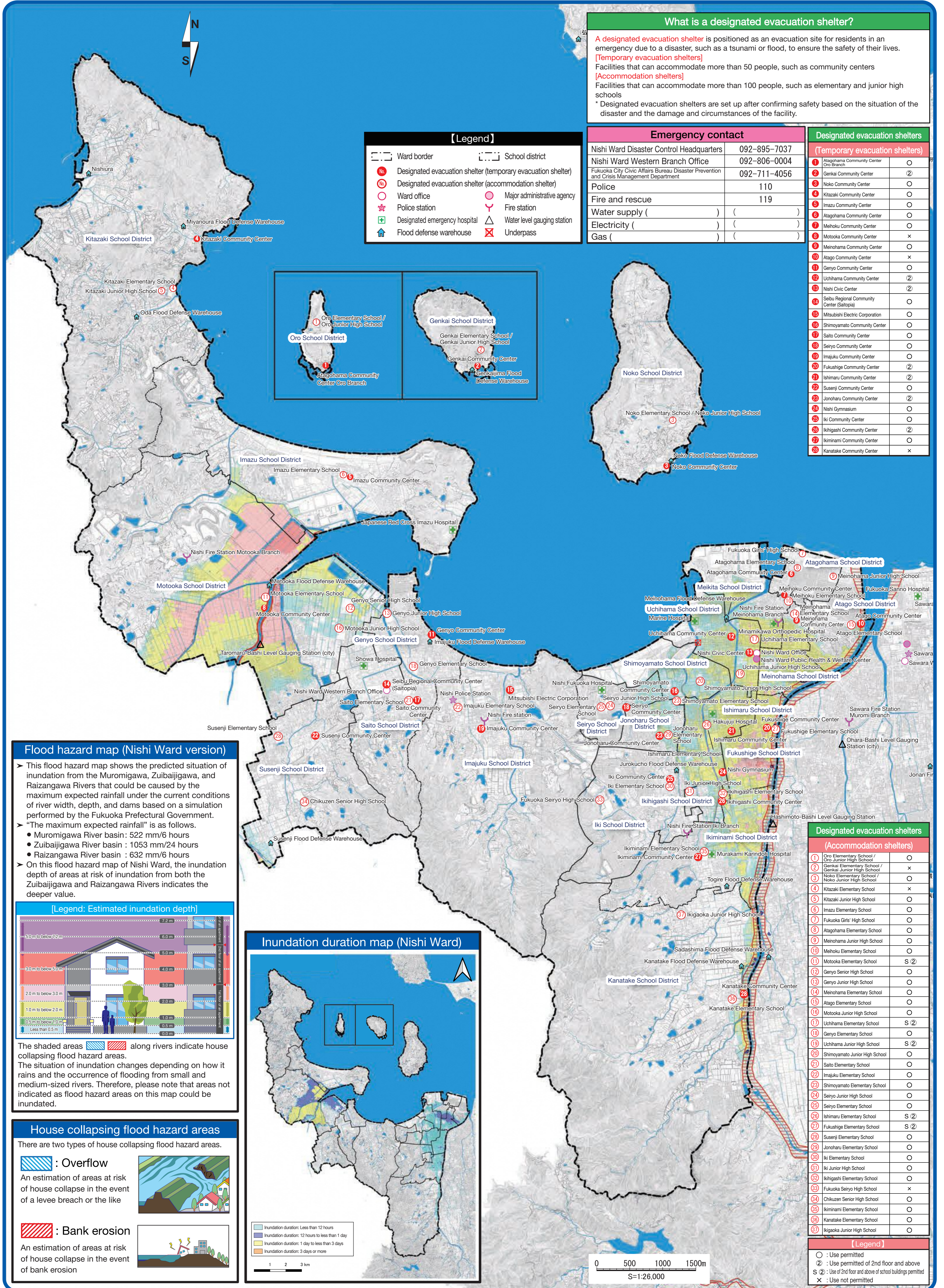


【西区】洪水ハザードマップ

(Target rivers: Muromigawa River, Zuibaijigawa River, Raizangawa River) / [Nishi Ward] Flood Hazard Map / 【西区】洪涝防災地图 / 【니시구】홍수위험지도



What is a designated evacuation shelter?

A designated evacuation shelter is positioned as an evacuation site for residents in an emergency due to a disaster, such as a tsunami or flood, to ensure the safety of their lives.

[Temporary evacuation shelters]
Facilities that can accommodate more than 50 people, such as community centers

[Accommodation shelters]
Facilities that can accommodate more than 100 people, such as elementary and junior high schools

* Designated evacuation shelters are set up after confirming safety based on the situation of the disaster and the damage and circumstances of the facility.

【Legend】

---	Ward border	---	School district
○	Designated evacuation shelter (temporary evacuation shelter)	○	Major administrative agency
○	Designated evacuation shelter (accommodation shelter)	○	Fire station
○	Ward office	△	Water level gauging station
★	Police station	⊗	Underpass
+	Designated emergency hospital		
🏠	Flood defense warehouse		

Emergency contact

Nishi Ward Disaster Control Headquarters	092-895-7037
Nishi Ward Western Branch Office	092-806-0004
Fukuoka City Civic Affairs Bureau Disaster Prevention and Crisis Management Department	092-711-4056
Police	110
Fire and rescue	119
Water supply () () ()	
Electricity () () ()	
Gas () () ()	

Designated evacuation shelters

[Temporary evacuation shelters]	
1 Atagohama Community Center	○
2 Genkai Community Center	②
3 Noko Community Center	○
4 Kitazaki Community Center	○
5 Imazu Community Center	○
6 Atagohama Community Center	○
7 Meihoku Community Center	○
8 Motooka Community Center	×
9 Meinohama Community Center	○
10 Atago Community Center	×
11 Genyo Community Center	○
12 Uchiyama Community Center	②
13 Nishi Civic Center	②
14 Seibu Regional Community Center (Saitopia)	○
15 Mitsubishi Electric Corporation	○
16 Shimoyamato Community Center	○
17 Saito Community Center	○
18 Seiryu Community Center	○
19 Imajuku Community Center	○
20 Fukushige Community Center	②
21 Ishimaru Community Center	②
22 Susenji Community Center	○
23 Jonoharu Community Center	②
24 Nishi Gymnasium	○
25 Iki Community Center	○
26 Ikihigashi Community Center	②
27 Ikiminami Community Center	○
28 Kanatake Community Center	×

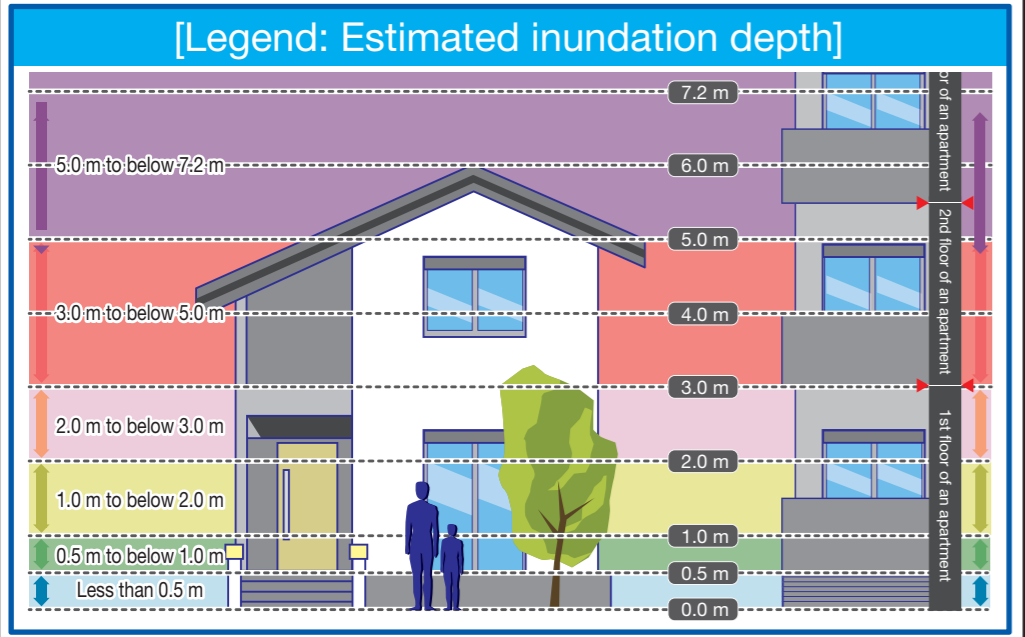
Flood hazard map (Nishi Ward version)

> This flood hazard map shows the predicted situation of inundation from the Muromigawa, Zuibaijigawa, and Raizangawa Rivers that could be caused by the maximum expected rainfall under the current conditions of river width, depth, and dams based on a simulation performed by the Fukuoka Prefectural Government.

> "The maximum expected rainfall" is as follows.

- Muromigawa River basin : 522 mm/6 hours
- Zuibaijigawa River basin : 1053 mm/24 hours
- Raizangawa River basin : 632 mm/6 hours

> On this flood hazard map of Nishi Ward, the inundation depth of areas at risk of inundation from both the Zuibaijigawa and Raizangawa Rivers indicates the deeper value.



The shaded areas along rivers indicate house collapsing flood hazard areas.

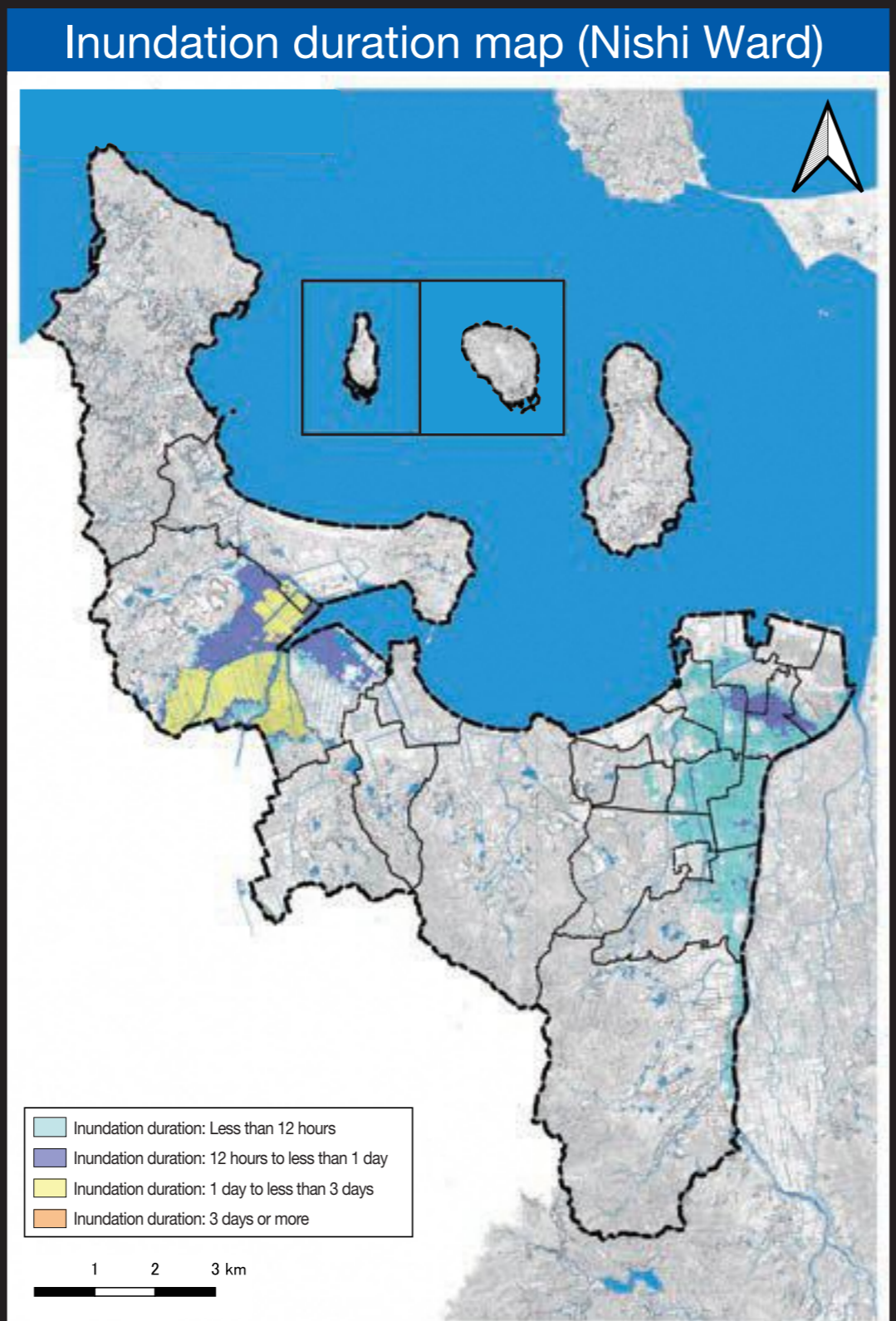
The situation of inundation changes depending on how it rains and the occurrence of flooding from small and medium-sized rivers. Therefore, please note that areas not indicated as flood hazard areas on this map could be inundated.

House collapsing flood hazard areas

There are two types of house collapsing flood hazard areas.

Overflow
An estimation of areas at risk of house collapse in the event of a levee breach or the like

Bank erosion
An estimation of areas at risk of house collapse in the event of bank erosion



Designated evacuation shelters

[Accommodation shelters]	
1 Oro Elementary School / Oro Junior High School	○
2 Genkai Elementary School / Genkai Junior High School	×
3 Noko Elementary School / Noko Junior High School	○
4 Kitazaki Elementary School	×
5 Kitazaki Junior High School	○
6 Imazu Elementary School	○
7 Fukuoka Girls' High School	○
8 Atagohama Elementary School	○
9 Meinohama Junior High School	○
10 Meihoku Elementary School	○
11 Motooka Elementary School	S ②
12 Genyo Senior High School	○
13 Genyo Junior High School	○
14 Meinohama Elementary School	○
15 Atago Elementary School	○
16 Motooka Junior High School	○
17 Uchiyama Elementary School	S ②
18 Genyo Elementary School	○
19 Uchiyama Junior High School	S ②
20 Shimoyamato Junior High School	○
21 Saito Elementary School	○
22 Imajuku Elementary School	○
23 Shimoyamato Elementary School	○
24 Seiryu Junior High School	○
25 Seiryu Elementary School	○
26 Ishimaru Elementary School	S ②
27 Fukushige Elementary School	S ②
28 Susenji Elementary School	○
29 Jonoharu Elementary School	○
30 Iki Elementary School	○
31 Iki Junior High School	○
32 Ikihigashi Elementary School	○
33 Fukuoka Seiryu High School	×
34 Chikuzen Senior High School	○
35 Ikiminami Elementary School	○
36 Kanatake Elementary School	○
37 Ikioka Junior High School	○

【Legend】

○ : Use permitted
 ② : Use permitted of 2nd floor and above
 S ② : Use of 2nd floor and above of school buildings permitted
 × : Use not permitted