

【早良区】洪水ハザードマップ

(Target rivers: Hiigawa River and Muromigawa River) / [Sawara Ward] Flood Hazard Map / 【早良区】洪涝防灾地图 / 【사와라구】홍수위험지도

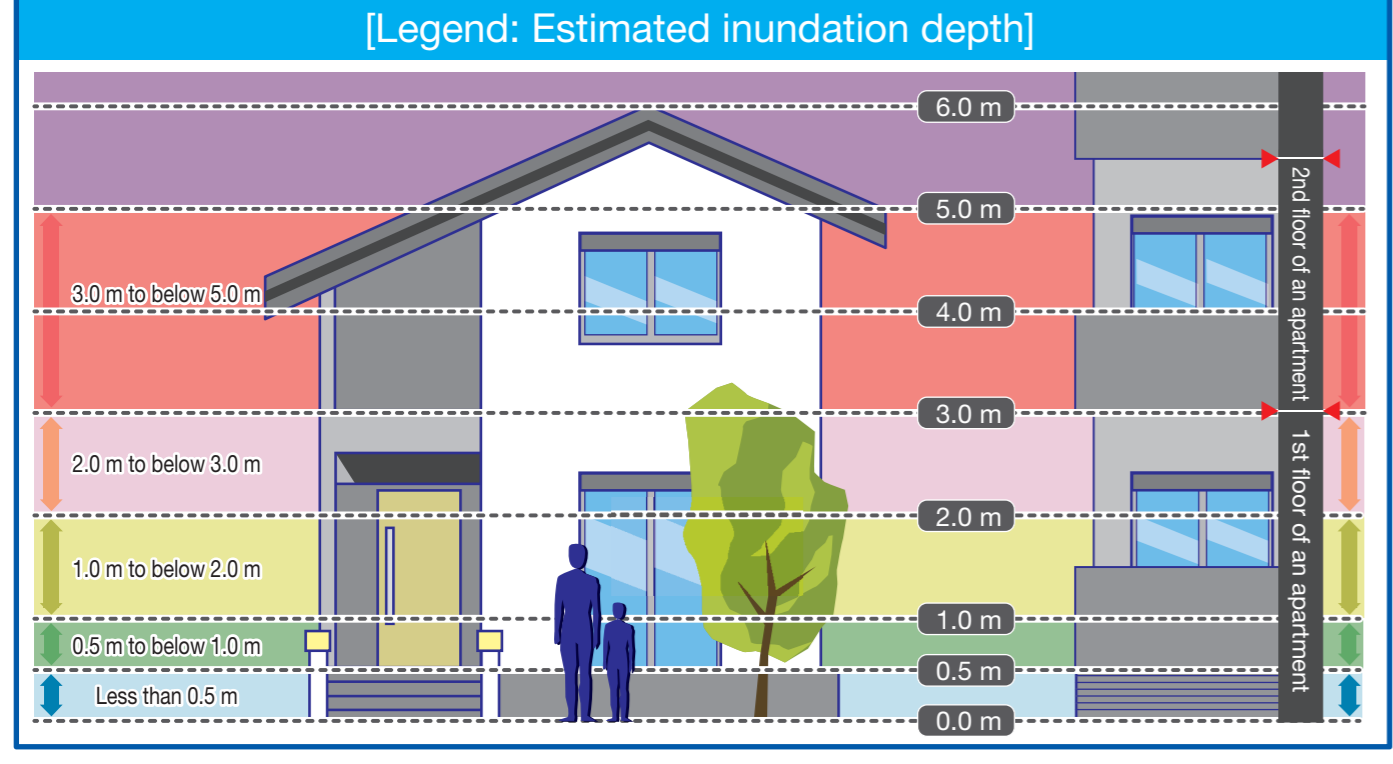
Flood hazard map (Sawara Ward version)

▶ This flood hazard map shows the predicted situation of inundation from the Hiigawa and Muromigawa Rivers that could be caused by the maximum expected rainfall under the current conditions of river width, depth, and dams based on a simulation performed by the Fukuoka Prefectural Government.

▶ "The maximum expected rainfall" is as follows.

- Hiigawa River basin : 615 mm/6 hours
- Muromigawa River basin: 522 mm/6 hours

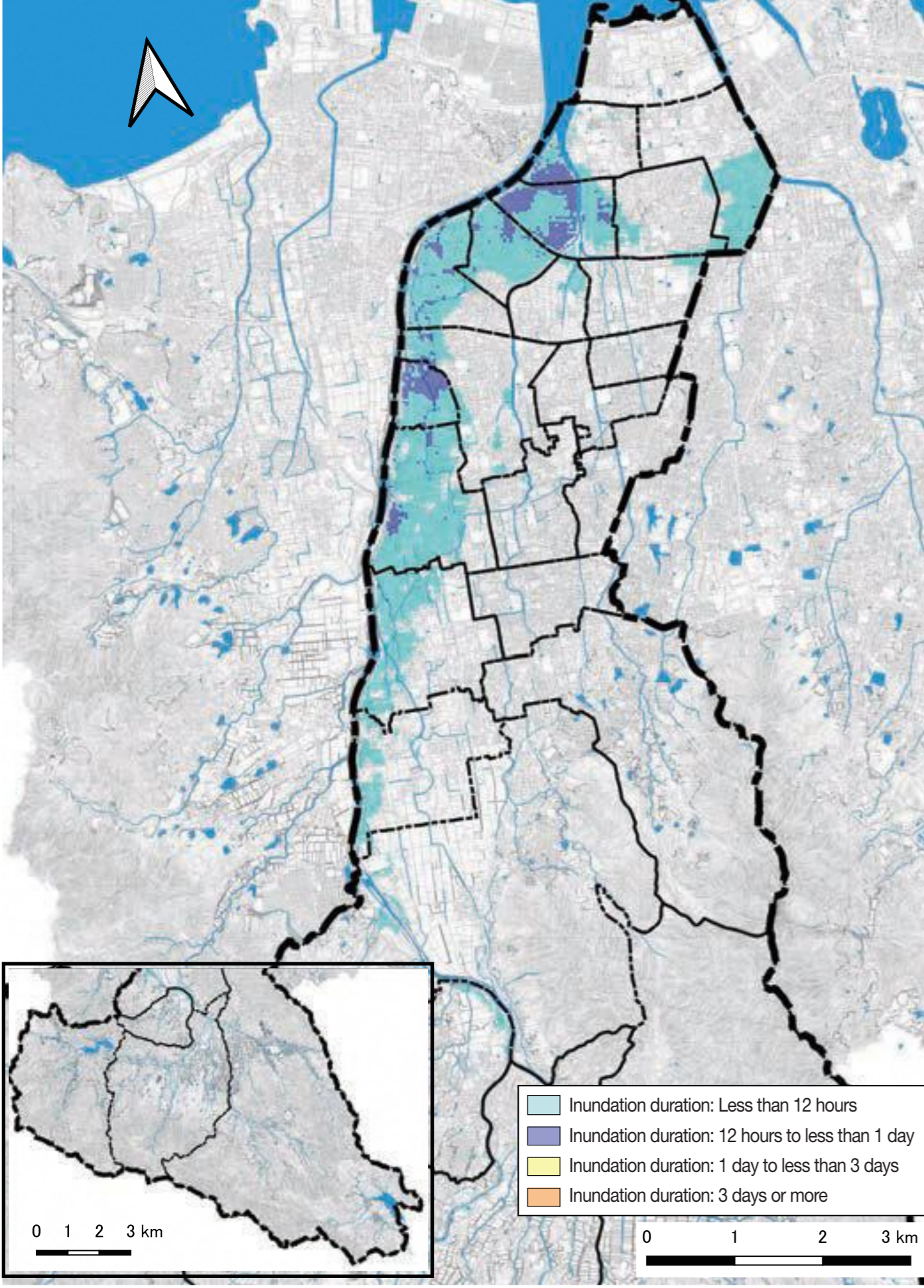
▶ On this flood hazard map of Sawara Ward, the inundation depth of areas at risk of inundation from both the Hiigawa and Muromigawa Rivers indicates the deeper value.



The shaded areas along rivers indicate house collapsing flood hazard areas.

The situation of inundation changes depending on how it rains and the occurrence of flooding from small and medium-sized rivers. Therefore, please note that areas not indicated as flood hazard areas on this map could be inundated.

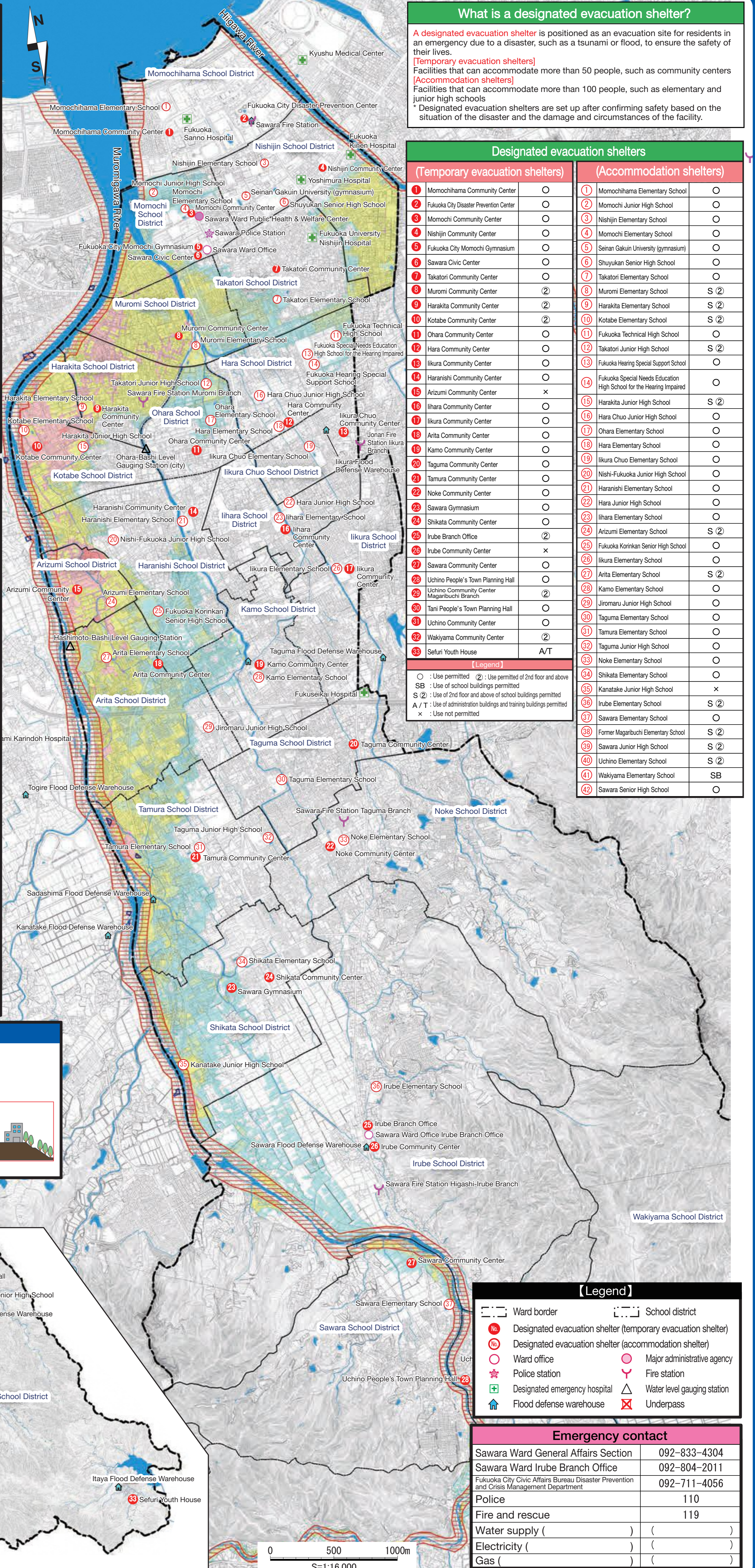
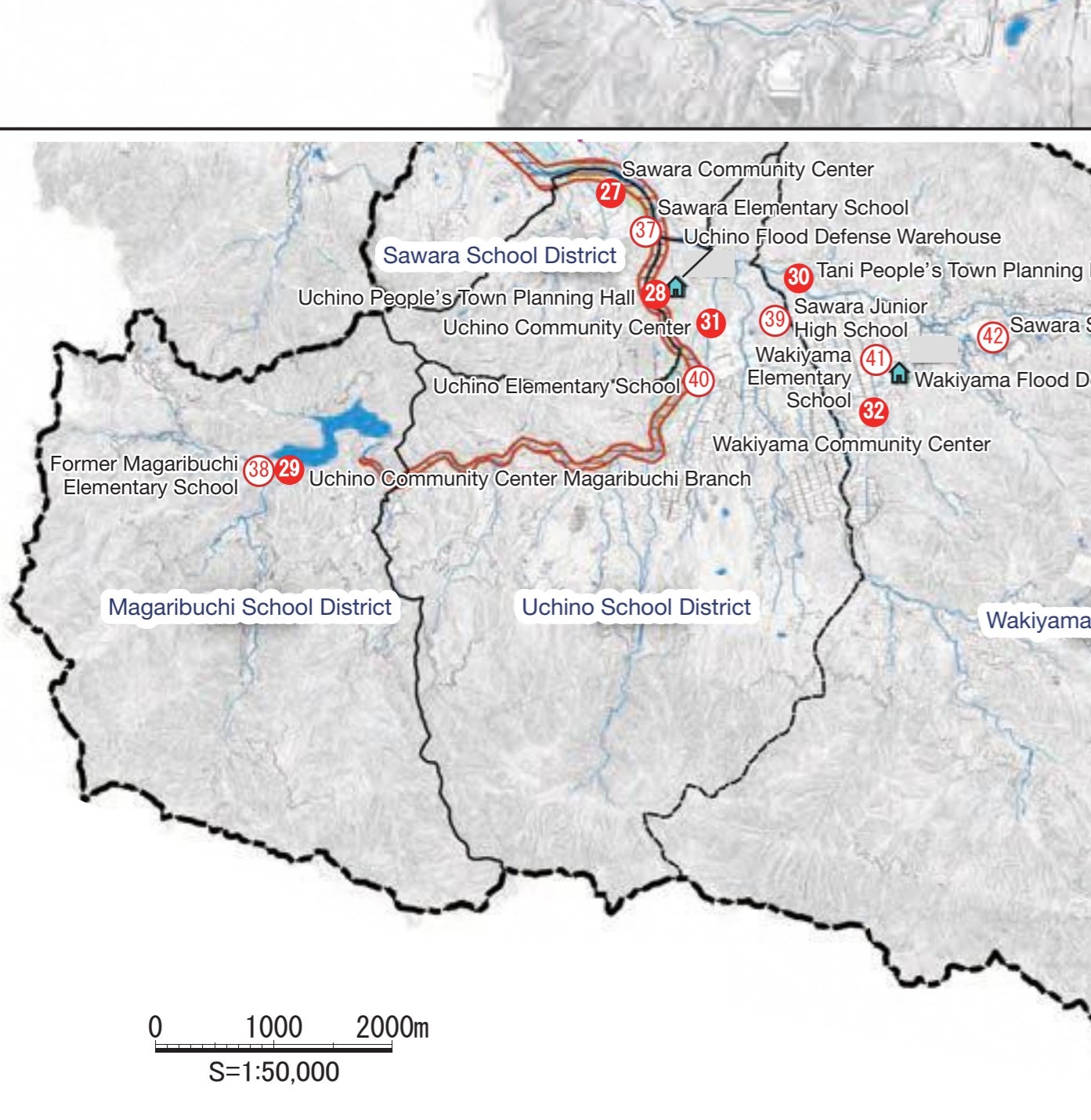
Inundation duration map (Sawara Ward)



House collapsing flood hazard areas

There are two types of house collapsing flood hazard areas.

- Overflow**: An estimation of areas at risk of house collapse in the event of a levee breach or the like.
- Bank erosion**: An estimation of areas at risk of house collapse in the event of bank erosion.



What is a designated evacuation shelter?

A designated evacuation shelter is positioned as an evacuation site for residents in an emergency due to a disaster, such as a tsunami or flood, to ensure the safety of their lives.

[Temporary evacuation shelters]
Facilities that can accommodate more than 50 people, such as community centers

[Accommodation shelters]
Facilities that can accommodate more than 100 people, such as elementary and junior high schools

* Designated evacuation shelters are set up after confirming safety based on the situation of the disaster and the damage and circumstances of the facility.

Designated evacuation shelters	
(Temporary evacuation shelters)	(Accommodation shelters)
1 Momochihama Community Center	1 Momochihama Elementary School
2 Fukuoka City Disaster Prevention Center	2 Momochi Junior High School
3 Momochi Community Center	3 Nishijin Elementary School
4 Nishijin Community Center	4 Momochi Elementary School
5 Fukuoka City Momochi Gymnasium	5 Seinan Gakuin University (gymnasium)
6 Sawara Civic Center	6 Shuyukan Senior High School
7 Takatori Community Center	7 Takatori Elementary School
8 Muromi Community Center	8 Muromi Elementary School
9 Harakita Community Center	9 Harakita Elementary School
10 Kotabe Community Center	10 Kotabe Elementary School
11 Ohara Community Center	11 Fukuoka Technical High School
12 Hara Community Center	12 Takatori Junior High School
13 Ikura Community Center	13 Fukuoka Hearing Special Support School
14 Haranishi Community Center	14 Fukuoka Special Needs Education High School for the Hearing Impaired
15 Arizumi Community Center	15 Harakita Junior High School
16 Ihara Community Center	16 Hara Chuo Junior High School
17 Ikura Community Center	17 Ohara Elementary School
18 Arita Community Center	18 Hara Elementary School
19 Kamo Community Center	19 Ikura Chuo Elementary School
20 Tagama Community Center	20 Nishi-Fukuoka Junior High School
21 Tamura Community Center	21 Haranishi Elementary School
22 Noko Community Center	22 Hara Junior High School
23 Sawara Gymnasium	23 Ihara Elementary School
24 Shikata Community Center	24 Arizumi Elementary School
25 Irube Branch Office	25 Fukuoka Korinkan Senior High School
26 Irube Community Center	26 Ikura Elementary School
27 Sawara Community Center	27 Arita Elementary School
28 Uchino People's Town Planning Hall	28 Kamo Elementary School
29 Uchino Community Center Magaribuchi Branch	29 Jiomaru Junior High School
30 Tani People's Town Planning Hall	30 Tagama Elementary School
31 Uchino Community Center	31 Tamara Elementary School
32 Wakiyama Community Center	32 Tagama Junior High School
33 Sefuri Youth House	33 Noko Elementary School
	34 Shikata Elementary School
	35 Kanatake Junior High School
	36 Kanatake Junior High School
	37 Irube Elementary School
	38 Former Magaribuchi Elementary School
	39 Sawara Junior High School
	40 Uchino Elementary School
	41 Wakiyama Elementary School
	42 Sawara Senior High School

[Legend]

- : Use permitted
- ② : Use permitted of 2nd floor and above
- SB : Use of school buildings permitted
- S ② : Use of 2nd floor and above of school buildings permitted
- A / T : Use of administration buildings and training buildings permitted
- x : Use not permitted

[Legend]

- Ward border
- School district
- ① Designated evacuation shelter (temporary evacuation shelter)
- ② Designated evacuation shelter (accommodation shelter)
- Ward office
- Major administrative agency
- ★ Police station
- △ Fire station
- ⊕ Designated emergency hospital
- △ Water level gauging station
- 🏠 Flood defense warehouse
- ⊗ Underpass

Emergency contact

Sawara Ward General Affairs Section	092-833-4304
Sawara Ward Irube Branch Office	092-804-2011
Fukuoka City Civic Affairs Bureau Disaster Prevention and Crisis Management Department	092-711-4056
Police	110
Fire and rescue	119
Water supply () ()	() ()
Electricity () ()	() ()
Gas () ()	() ()