

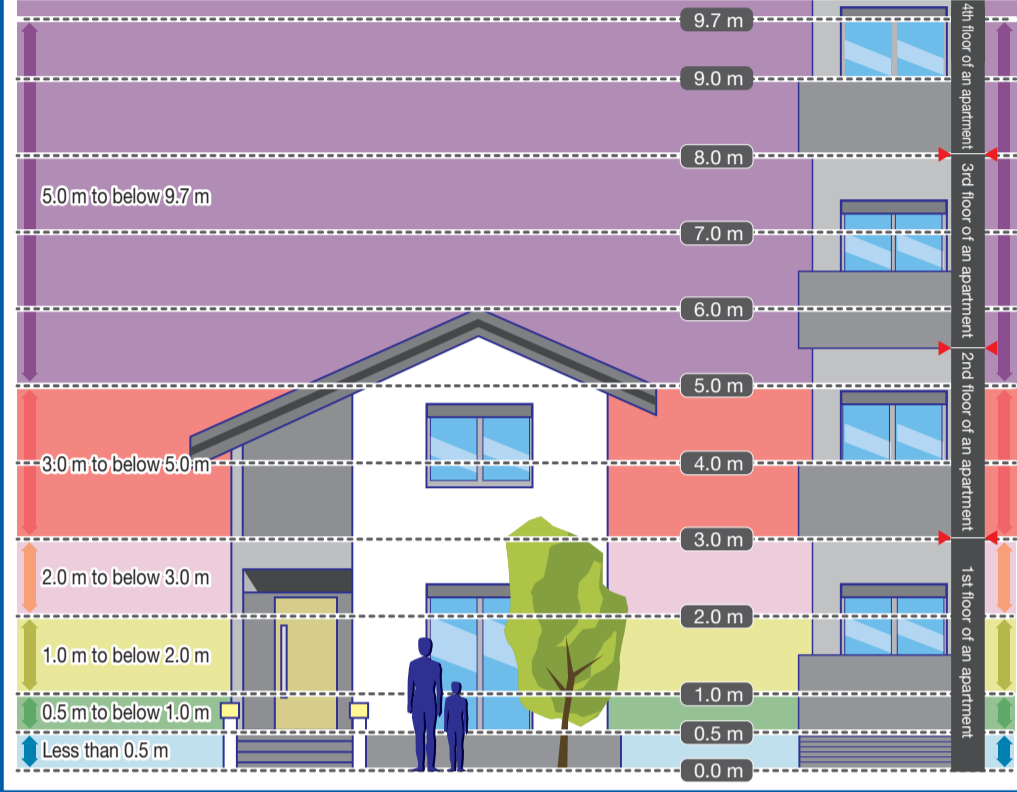
【南区】洪水ハザードマップ

(Target rivers: Nakagawa River and Hiigawa River) / 【Minami Ward】 Flood Hazard Map / 【南区】洪涝防灾地图 / 【미나미구】 홍수위험지도

Flood hazard map (Minami Ward version)

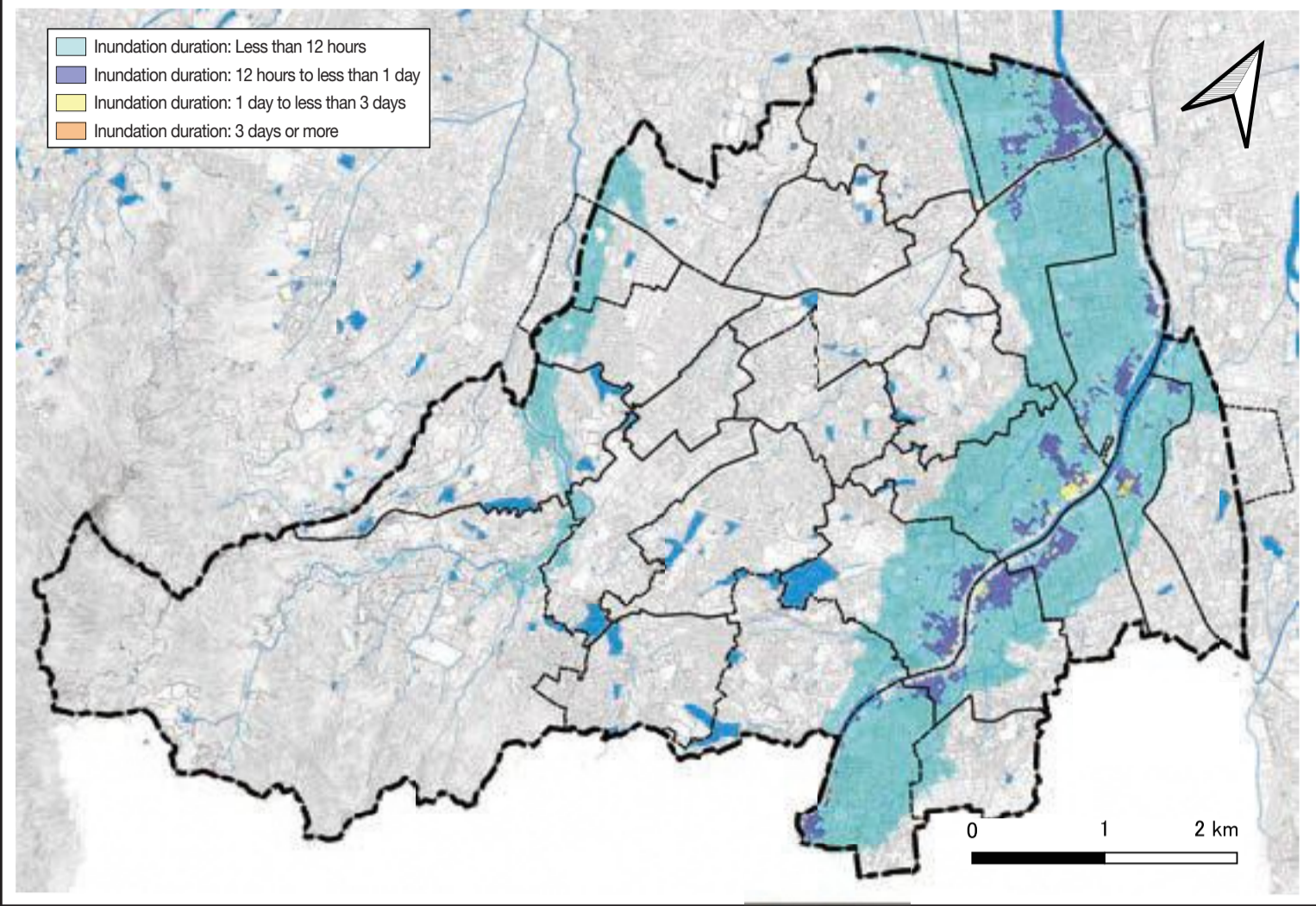
- This flood hazard map shows the predicted situation of inundation from the Nakagawa and Hiigawa Rivers that could be caused by the maximum expected rainfall under the current conditions of river width, depth, and dams based on a simulation performed by the Fukuoka Prefectural Government.
- *The maximum expected rainfall* is as follows.
 - Nakagawa River basin: 961 mm/24 hours
 - Hiigawa River basin: 615 mm/6 hours

[Legend: Estimated inundation depth]



The shaded areas along rivers indicate house collapsing flood hazard areas. The situation of inundation changes depending on how it rains and the occurrence of flooding from small and medium-sized rivers. Therefore, please note that areas not indicated as flood hazard areas on this map could be inundated.

Inundation duration map (Minami Ward)



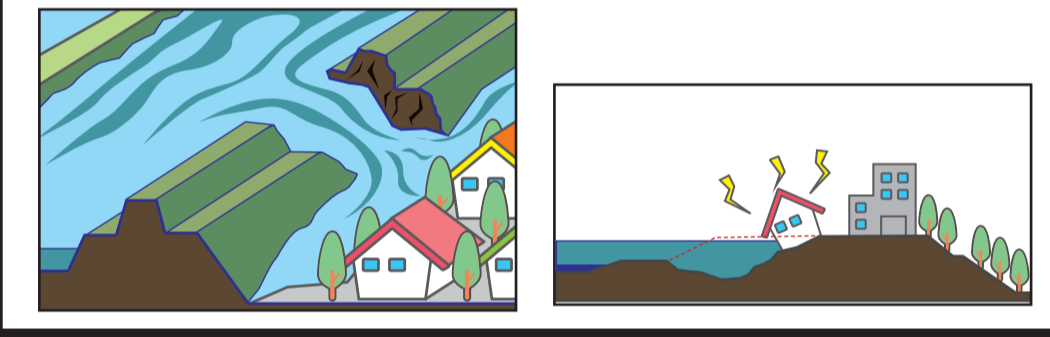
House collapsing flood hazard areas

There are two types of house collapsing flood hazard areas.

- : Overflow
- : Bank erosion

An estimation of areas at risk of house collapse in the event of a levee breach or the like

An estimation of areas at risk of house collapse in the event of bank erosion



What is a designated evacuation shelter?

A designated evacuation shelter is positioned as an evacuation site for residents in an emergency due to a disaster, such as a tsunami or flood, to ensure the safety of their lives.

[Temporary evacuation shelters]
Facilities that can accommodate more than 50 people, such as community centers

[Accommodation shelters]
Facilities that can accommodate more than 100 people, such as elementary and junior high schools

* Designated evacuation shelters are set up after confirming safety based on the situation of the disaster and the damage and circumstances of the facility.

Designated evacuation shelters

(Temporary evacuation shelters)		
1	Nishi-Takamiya Community Center	○
2	Ogusu Community Center	②
3	Nagaoka Community Center	○
4	Oike Community Center	○
5	Tamagawa Community Center	○
6	Minami Gymnasium	○
7	Nishi-Nagazumi Community Center	②
8	Nagazumi Community Center	○
9	Minami Civic Center	○
10	Wakahisa Community Center	○
11	Shiobaru Community Center	×
12	Chikushigaoka Community Center	○
13	Higashi-Wakahisa Community Center	○
14	Nishi-Hanahata Community Center	○
15	Takaki Community Center	②
16	Miyake Community Center	○
17	Higashi-Hanahata Community Center	○
18	Miyake Community Center	②
19	Hanahata Community Center	○
20	Kashihara Community Center	×
21	Yokote Community Center	②
22	Notame Community Center	○
23	Tsuruta Community Center	○
24	Osa Community Center	②
25	Yanaga Community Center	○
26	Yanaganihi Community Center	②

(Accommodation shelters)

1	Nishi-Takamiya Elementary School	○
2	Takamiya Junior High School	S ②
3	Ogusu Elementary School	S ②
4	Former Sumiyoshi Junior High School	S ②
5	Nagaoka Junior High School	×
6	Nagaoka Elementary School	○
7	Nishi-Nagazumi Elementary School	○
8	Haruyoshi Junior High School	S ②
9	Tsuzuki Gakuen (gymnasium)	○
10	Oike Elementary School	○
11	Tamagawa Elementary School	S ②
12	Nagazumi Elementary School	○
13	Chikushigaoka Senior High School	○
14	Noma Junior High School	○
15	Shiobaru Elementary School	×
16	Wakahisa Elementary School	○
17	Chikushigaoka Junior High School	○
18	Miyake Junior High School	×
19	Chikushigaoka Elementary School	○
20	Higashi-Wakahisa Elementary School	○
21	Nishi-Hanahata Elementary School	○
22	Hanahata Junior High School	○
23	Takaki Elementary School	S ②
24	Miyake Junior High School	×
25	Miyake Elementary School	○
26	Miyake Elementary School	○
27	Higashi-Hanahata Elementary School	○
28	Hanahata Elementary School	○
29	Kashihara Elementary School	○
30	Fukusho Senior High School	○
31	Yokote Elementary School	○
32	Kashihara Junior High School	○
33	Yokote Junior High School	×
34	Notame Elementary School	○
35	Osa Elementary School	○
36	Hakuryo Senior High School	×
37	Roji Elementary School	○
38	Roji Junior High School	○
39	Tsuruta Elementary School	○
40	Osa Junior High School	○
41	Yanaganihi Elementary School	S ②
42	Yanaga Elementary School	○

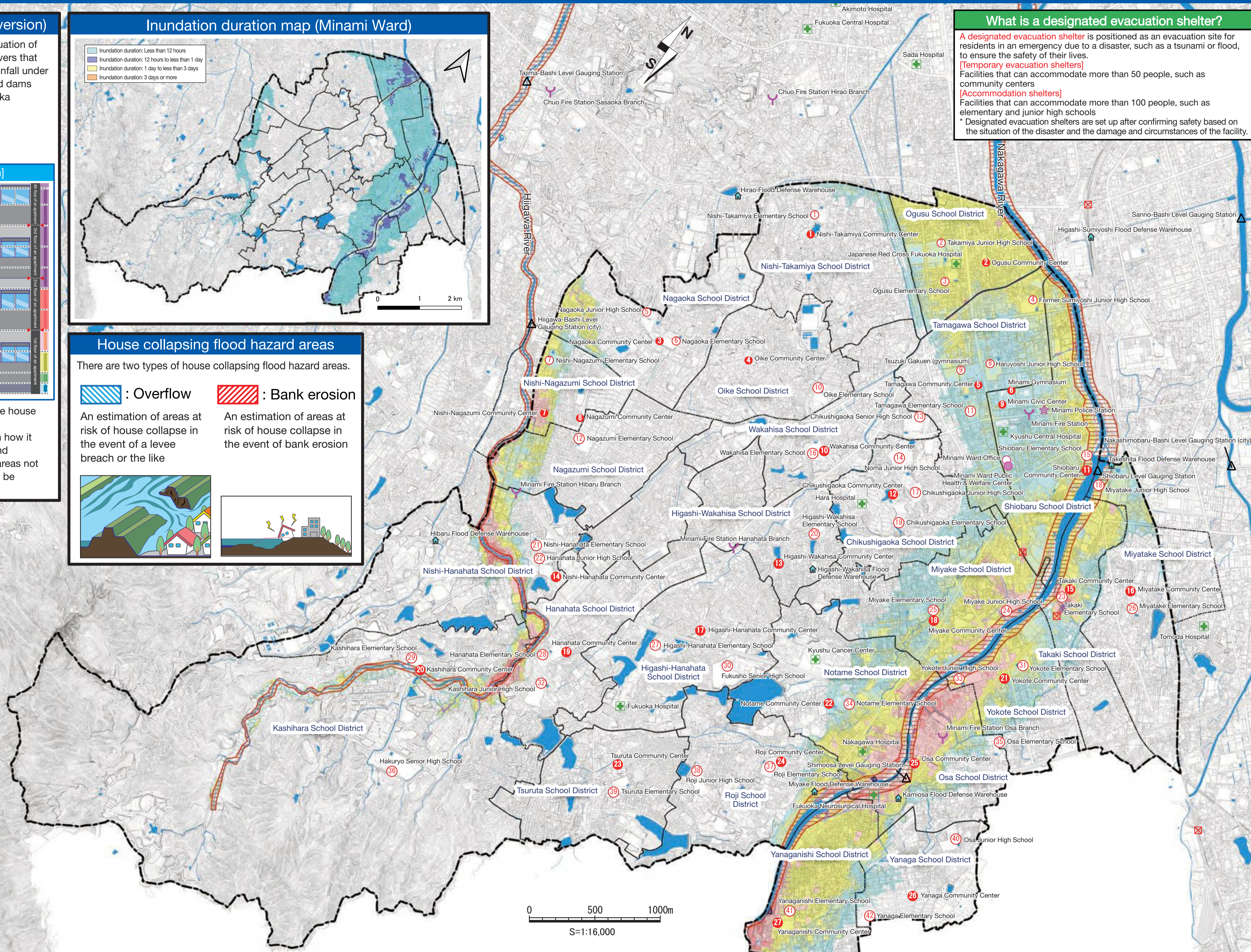
○ : Use permitted
 ② : Use permitted of 2nd floor and above
 S ② : Use of 2nd floor and above of school buildings permitted
 × : Use not permitted

Emergency contact

Minami Ward General Affairs Section	092-559-5063
Fukuoka City Civic Affairs Bureau Disaster Prevention and Crisis Management Department	092-711-4056
Police	110
Fire and rescue	119
Water supply () ()	() ()
Electricity () ()	() ()
Gas () ()	() ()

【Legend】

- Ward border
- School district
- Designated evacuation shelter (temporary evacuation shelter)
- Designated evacuation shelter (accommodation shelter)
- Ward office
- Major administrative agency
- Police station
- Fire station
- Designated emergency hospital
- Water level gauging station
- Flood defense warehouse
- Underpass



0 500 1000m
 S=1:16,000