

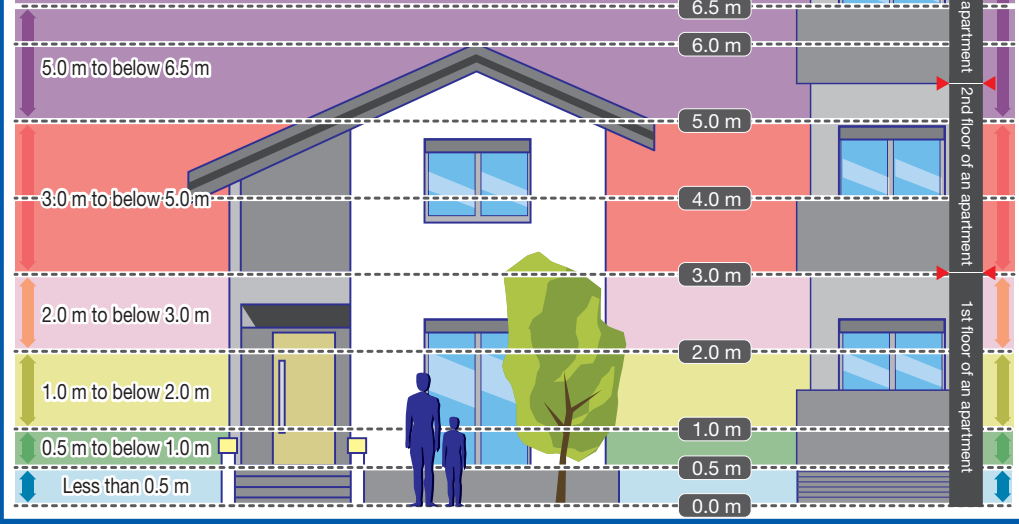
【博多区】洪水ハザードマップ

(Target rivers: Umigawa River, Mikasagawa River, and Nakagawa River) / 【Hakata Ward】 Flood Hazard Map / 【博多区】洪涝防灾地图 / 【하카타구】홍수위험지도

Flood hazard map (Hakata Ward)

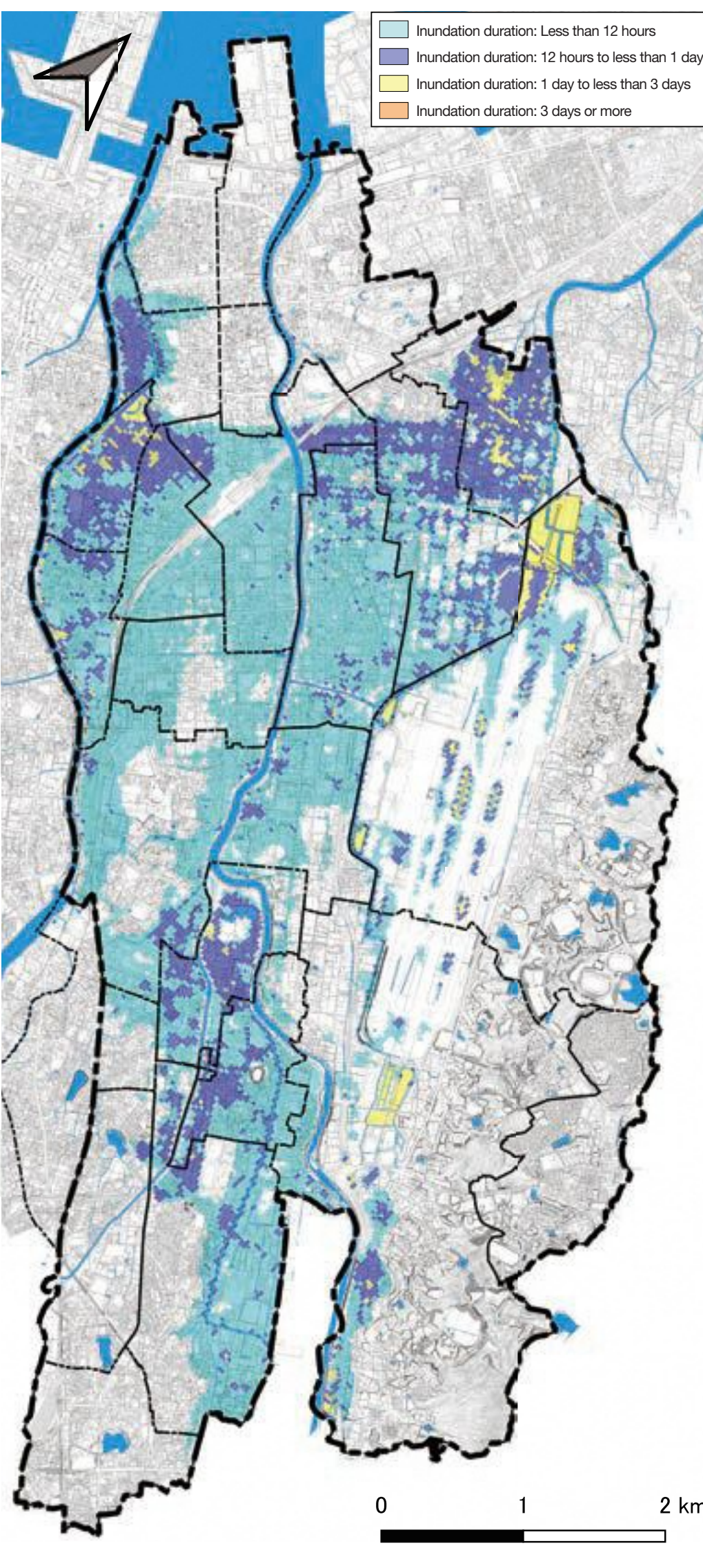
- This flood hazard map shows the predicted situation of inundation from the Umigawa, Mikasagawa, and Nakagawa Rivers that could be caused by the maximum expected rainfall under the current conditions of river width, depth, and dams based on a simulation performed by the Fukuoka Prefectural Government.
- "The maximum expected rainfall" is as follows.
 - Umigawa River basin : 674 mm/9 hours
 - Mikasagawa River basin: 966 mm/24 hours
 - Nakagawa River basin : 961 mm/24 hours
- On this flood hazard map of Hakata Ward, the inundation depth of areas at risk of inundation from two of the Umigawa, Nakagawa and Mikasagawa Rivers indicates the deeper value.

Legend: Estimated inundation depth



The shaded areas along rivers indicate house collapsing flood hazard areas. The situation of inundation changes depending on how it rains and the occurrence of flooding from small and medium-sized rivers. Therefore, please note that areas not indicated as flood hazard areas on this map could be inundated.

Inundation duration map (Hakata Ward)



House collapsing flood hazard areas

There are two types of house collapsing flood hazard areas.

- Overflow**: An estimation of areas at risk of house collapse in the event of a levee breach or the like.
- Bank erosion**: An estimation of areas at risk of house collapse in the event of bank erosion.

Legend

- Ward border
- Underground mall
- Sub-district of Hakata School District
- Sub-district of Sumiyoshi School District
- Designated evacuation shelter (temporary evacuation shelter)
- Designated evacuation shelter (accommodation shelter)
- Fukuoka City Office
- Major administrative agency
- Police station
- Designated emergency hospital
- Flood defense warehouse
- School district
- Sub-district of Sumiyoshi School District
- Ward office
- Fire station
- Water level gauging station
- Underpass

What is a designated evacuation shelter?

A designated evacuation shelter is positioned as an evacuation site for residents in an emergency due to a disaster, such as a tsunami or flood, to ensure the safety of their lives.

[Temporary evacuation shelters]

Facilities that can accommodate more than 50 people, such as community centers
[Accommodation shelters]
Facilities that can accommodate more than 100 people, such as elementary and junior high schools

* Designated evacuation shelters are set up after confirming safety based on the situation of the disaster and the damage and circumstances of the facility.

Designated evacuation shelters

(Temporary evacuation shelters)

1	Ohama Community Center	○
2	Naraya Community Center	○
3	Civic Gymnasium	○
4	Chiyo Community Center	○
5	Gokusho Community Center	○
6	Reisen Community Center	○
7	Higashi-Yoshizuka Hall	②
8	Higashi-Yoshizuka Community Center	②
9	Yoshizuka Hall	×
10	Yoshizuka Community Center	②
11	Katakasu Community Center	×
12	Higashi-Sumiyoshi Community Center	②
13	Toko Hall	②
14	Sumiyoshi Community Center	②
15	Toko Community Center	×
16	Minoshima Community Center	②
17	Haruzumi Community Center	○
18	Hakata Gymnasium	×
19	Hakata Civic Center	×
20	Mushiroda Community Center	○
21	Naka Hall	②
22	Mushiroda Hall	○
23	Naka Community Center	×
24	Yayoi Community Center	×
25	Itazukekita Community Center	②
26	Yayoi Hall	②
27	Itazukekita Hall	②
28	Tsukiguma Community Center	○
29	Higashi-Tsukiguma Community Center	○
30	Higashi-Tsukiguma Hall	○
31	Tsukiguma Hall	○
32	Itazuke Hall	○
33	Sanchiku Hall	○
34	Itazuke Community Center	○
35	Sanchiku Community Center	○
36	Sazanpia Hakata	○
37	Nakaminami Community Center	○
38	Nakaminami Hall	○

(Accommodation shelters)

1	Hakata Junior High School	×
2	Chiyo Junior High School	○
3	Hakata Elementary School	○
4	Chiyo Elementary School	○
5	Hakata Seisho High School	×
6	Fukuoka Senior High School	○
7	Higashi-Yoshizuka Elementary School	×
8	Yoshizuka Elementary School	S ②
9	Yoshizuka Junior High School	×
10	Katakasu Elementary School	×
11	Former Sumiyoshi Elementary School	×
12	Toko Junior High School	○
13	Toko Elementary School	S ②
14	Higashi-Sumiyoshi Junior High School	S ②
15	Higashi-Sumiyoshi Elementary School	○
16	Sumiyoshi Elementary School / Sumiyoshi Junior High School	×
17	Haruzumi Elementary School	○
18	Mushiroda Elementary School	○
19	Naka Elementary School	○
20	Naka Junior High School	○
21	Mushiroda Junior High School	○
22	Accion Fukuoka	○
23	Yayoi Elementary School	×
24	Itazukekita Elementary School	S ②
25	Tsukiguma Elementary School	○
26	Higashi-Tsukiguma Elementary School	○
27	Itazuke Elementary School	○
28	Sanchiku Junior High School	○
29	Itazuke Junior High School	S ②
30	Sanchiku Elementary School	○
31	Nakaminami Elementary School	○

Legend

- : Use permitted
- ② : Use permitted of 2nd floor and above
- S ② : Use of 2nd floor and above of school buildings permitted
- ×

Emergency contact

Hakata Ward General Affairs Section	092-419-1044
Fukuoka City Civic Affairs Bureau Disaster Prevention and Crisis Management Department	092-711-4056
Police	110
Fire and rescue	119
Water supply ()	()
Electricity ()	()
Gas ()	()

Scale: S=1:14,000