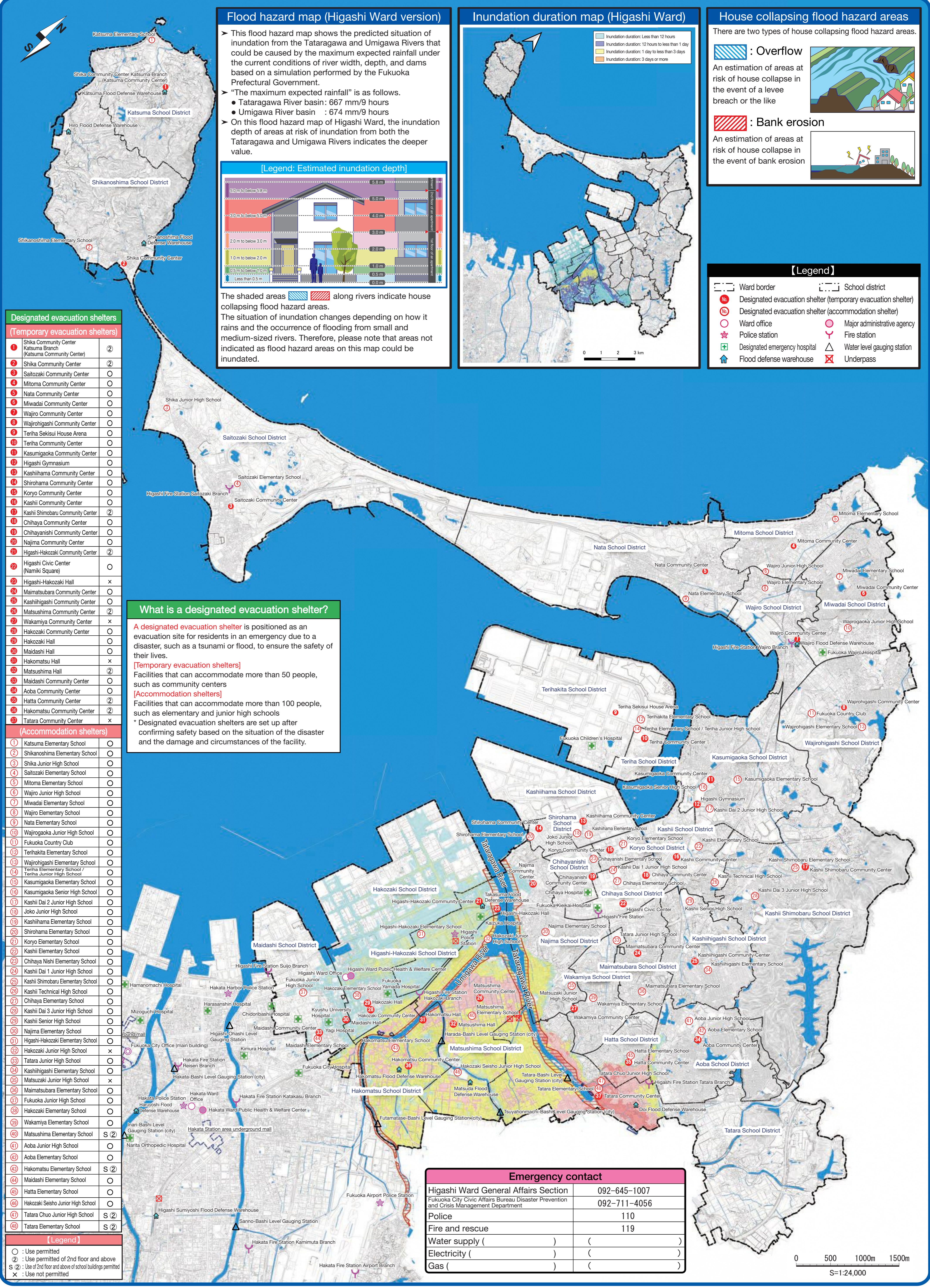


# 【東区】洪水ハザードマップ

(Target rivers: Tataragawa River and Umigawa River) / 【Higashi Ward】 Flood Hazard Map / 【东区】洪涝防灾地图 / 【히가시구】 홍수위험지도



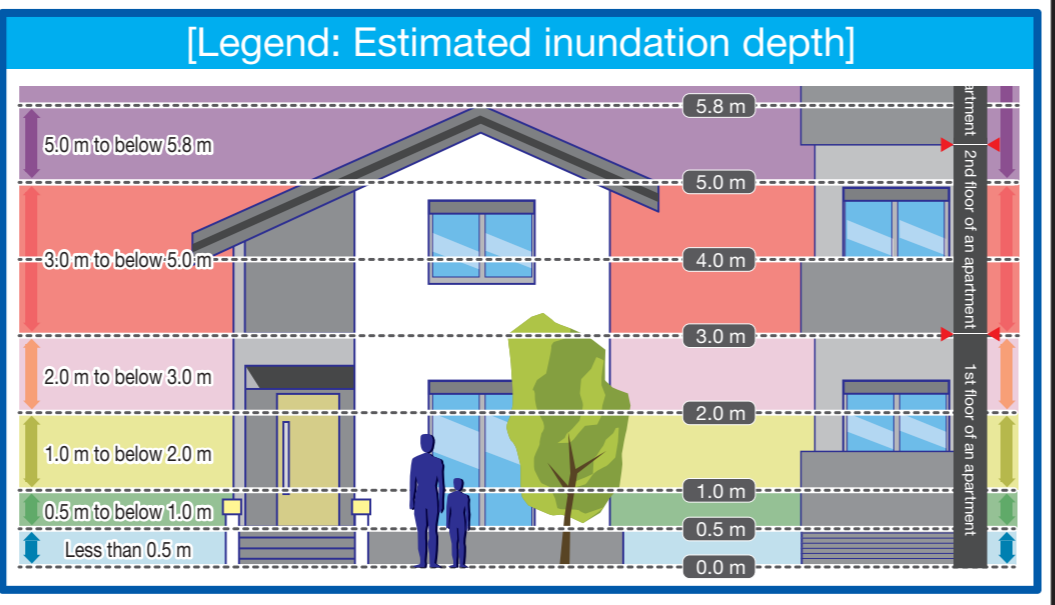
## Flood hazard map (Higashi Ward version)

This flood hazard map shows the predicted situation of inundation from the Tataragawa and Umigawa Rivers that could be caused by the maximum expected rainfall under the current conditions of river width, depth, and dams based on a simulation performed by the Fukuoka Prefectural Government.

“The maximum expected rainfall” is as follows.

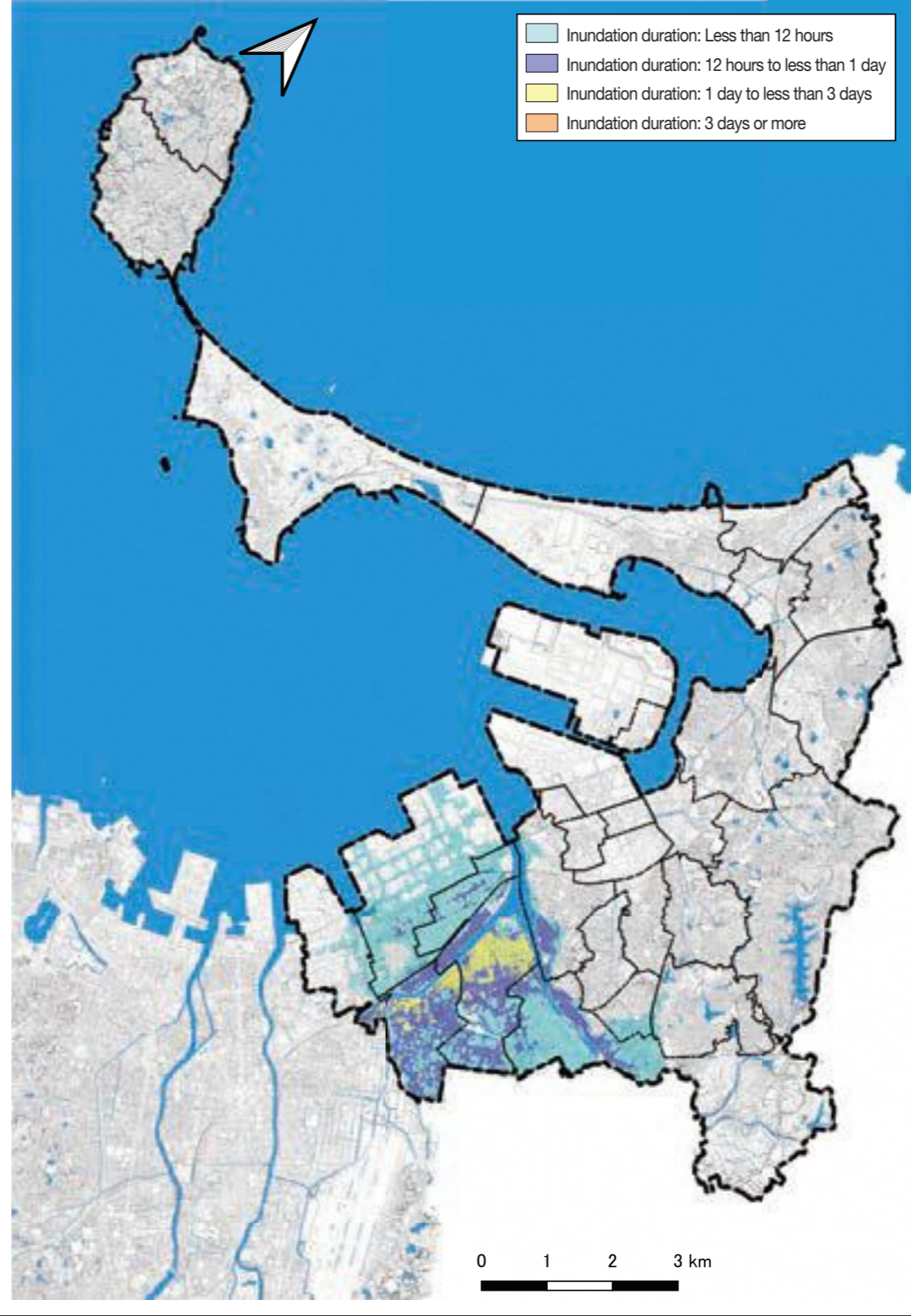
- Tataragawa River basin: 667 mm/9 hours
- Umigawa River basin: 674 mm/9 hours

On this flood hazard map of Higashi Ward, the inundation depth of areas at risk of inundation from both the Tataragawa and Umigawa Rivers indicates the deeper value.



The shaded areas along rivers indicate house collapsing flood hazard areas. The situation of inundation changes depending on how it rains and the occurrence of flooding from small and medium-sized rivers. Therefore, please note that areas not indicated as flood hazard areas on this map could be inundated.

## Inundation duration map (Higashi Ward)



## House collapsing flood hazard areas

There are two types of house collapsing flood hazard areas.

**Overflow**: An estimation of areas at risk of house collapse in the event of a levee breach or the like.

**Bank erosion**: An estimation of areas at risk of house collapse in the event of bank erosion.

## Designated evacuation shelters

### (Temporary evacuation shelters)

1	Shika Community Center (Katsuma Branch)	2	Shikanoshima Community Center
3	Shika Community Center	4	Saitozaki Community Center
5	Mitoma Community Center	6	Nata Community Center
7	Miwadai Community Center	8	Wajiro Community Center
9	Wajirogashi Community Center	10	Teriha Sekisui House Arena
11	Teriha Community Center	12	Kasumiagaoka Community Center
13	Higashi Gymnasium	14	Kashihama Community Center
15	Shirohama Community Center	16	Koryo Community Center
17	Kashii Community Center	18	Kashii Shimobaru Community Center
19	Chihaya Community Center	20	Chihayanishi Community Center
21	Najima Community Center	22	Higashi-Hakozaki Community Center
23	Higashi Civic Center (Namiki Square)	24	Higashi-Hakozaki Hall
25	Maimatsubara Community Center	26	Kashihigashi Community Center
27	Matsushima Community Center	28	Wakamiya Community Center
29	Hakozaki Community Center	30	Hakozaki Hall
31	Maidashi Hall	32	Hakomatsu Hall
33	Matsushima Hall	34	Maidashi Community Center
35	Aoba Community Center	36	Hatta Community Center
37	Hakomatsu Community Center	38	Tatara Community Center

### (Accommodation shelters)

1	Katsuma Elementary School	2	Shikanoshima Elementary School
3	Shika Junior High School	4	Saitozaki Elementary School
5	Mitoma Elementary School	6	Wajiro Junior High School
7	Miwadai Elementary School	8	Wajiro Elementary School
9	Nata Elementary School	10	Wajirogaka Junior High School
11	Fukuoka Country Club	12	Terihakita Elementary School
13	Wajirogashi Elementary School	14	Teriha Elementary School / Teriha Junior High School
15	Kasumiagaoka Elementary School	16	Kasumiagaoka Senior High School
17	Kashii Dai 2 Junior High School	18	Joko Junior High School
19	Kashihama Elementary School	20	Shirohama Elementary School
21	Koryo Elementary School	22	Kashii Elementary School
23	Chihaya Nishi Elementary School	24	Kashii Dai 1 Junior High School
25	Kashii Shimobaru Elementary School	26	Kashii Technical High School
27	Chihaya Elementary School	28	Kashii Dai 3 Junior High School
29	Kashii Dai 3 Junior High School	30	Najima Elementary School
31	Higashi-Hakozaki Elementary School	32	Hakomatsu Elementary School
33	Tatara Junior High School	34	Kashihigashi Elementary School
35	Matsuzaki Junior High School	36	Maimatsubara Elementary School
37	Hakozaki Elementary School	38	Fukuoka Junior High School
39	Wakamiya Elementary School	40	Matsushima Elementary School
41	Aoba Junior High School	42	Aoba Elementary School
43	Hakomatsu Elementary School	44	Maidashi Elementary School
45	Hatta Elementary School	46	Hakozaki Seisho Junior High School
47	Tatara Chuo Junior High School	48	Tatara Elementary School

**Legend**

- : Use permitted
- ② : Use permitted of 2nd floor and above
- S ② : Use of 2nd floor and above of school buildings permitted
- × : Use not permitted

## What is a designated evacuation shelter?

A designated evacuation shelter is positioned as an evacuation site for residents in an emergency due to a disaster, such as a tsunami or flood, to ensure the safety of their lives.

**[Temporary evacuation shelters]**  
Facilities that can accommodate more than 50 people, such as community centers

**[Accommodation shelters]**  
Facilities that can accommodate more than 100 people, such as elementary and junior high schools

\* Designated evacuation shelters are set up after confirming safety based on the situation of the disaster and the damage and circumstances of the facility.

## Emergency contact

Higashi Ward General Affairs Section	092-645-1007
Fukuoka City Civic Affairs Bureau Disaster Prevention and Crisis Management Department	092-711-4056
Police	110
Fire and rescue	119
Water supply ( ) ( ) ( )	( ) ( ) ( )
Electricity ( ) ( ) ( )	( ) ( ) ( )
Gas ( ) ( ) ( )	( ) ( ) ( )

0 500 1000m 1500m  
S=1:24,000